



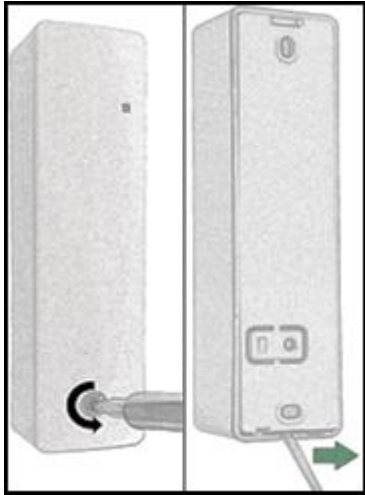
QUICK INSTALLATION GUIDE

DOOR & WINDOW MONITORING DEVICE (LAN-WMBUS-M2)



Recommended mounting instructions:

- For best horizontal range, place the device upright
- For best vertical range, place the device horizontally
- For maximum range, mount the device and receiver so they have the same polarization
- Avoid placing directly against metallic objects to maximize range



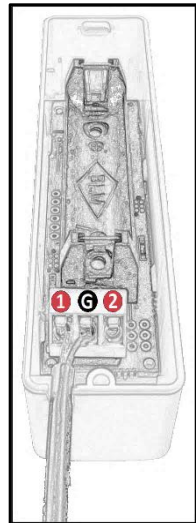
Step 1a (left):

Open the device using a torx screwdriver on the front screw. Unscrew by turning counterclockwise.

Step 1b (right):

Separate the back piece by using, for example, a screwdriver at the bottom of the device as in the right picture.

If an external magnet is going to be connected, continue to **Step 2**. Otherwise skip to **Step 3**.



Remove battery before mounting/unmounting cables!

Step 2: Connecting external magnet detector

Cut out the plastic at the bottom according to the picture before mounting the external magnet detector cable. Do NOT connect the two cables which are marked and entwined. Instead, use the two cables without marking.

Connect one cable to input marked by (1).

Connect the other cable to input marked by (G).

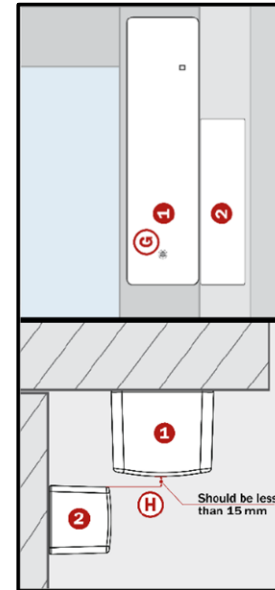
Do not insert the battery yet.

Continue to **Step 3**.

Step 3: Starting device

If an external magnet detector has been attached (see **Step 2**), then this needs to be activated - Hold a magnet against the external magnet detector.

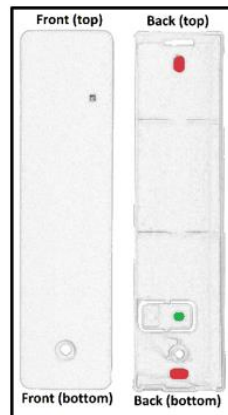
Inserting the battery. The red LED at the front of the device will flash for 10 seconds to indicate that an external magnet detector was detected. If no external magnet detector is used, then simply insert the battery and the device will start up.



Step 4: Placement

Before mounting the device and magnet, make sure the magnet (marked by number 2) can be mounted close enough to the device (marked by number 1), otherwise the device won't feel the presence of the magnet while operational.

If an external magnet detector has been attached, then the external magnet detector and the magnet must be close to each other as well.

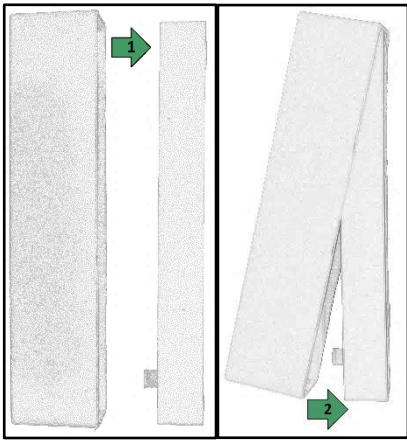


Step 5:

Mount the back piece to a wall, window frame, or a door frame according to the recommended mounting instructions on the first page together with **Step 4**.

If screws are used, fasten the screws in the holes marked by red in the picture.

If the device should alert if removed from wall (sabotage), fasten a screw in the hole marked by green in the picture.

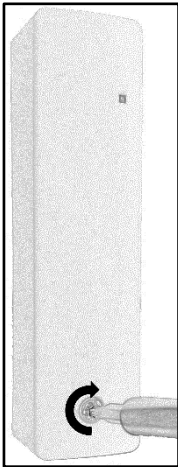


Step 6a (left):

See picture in **Step 5** on the orientation of the device, then insert the top part of the front piece onto the top part of the back piece (1).

Step 6b (right):

Insert the bottom part of the front piece onto the bottom part of the back piece (2).



Step 7:

Put the torx screw (from **Step 1**) in the hole at the front and tighten the screw using a torx screwdriver.

Make sure that the device is securely mounted.

Mount the magnet to the device according to recommendations in **Step 4**.

If an external magnet detector has been attached, lay out the cable and fasten the external magnet detector to the required wall, window frame, or door frame together with the magnet.

Installation is complete!